



Homelessness and Housing

House General, Housing and Military Affairs Committee

January 8, 2021





“the dual goals of creating affordable housing for Vermonters, and conserving and protecting Vermont’s agricultural land, forestland, historic properties, important natural areas, and recreational lands of primary importance to the economic vitality and quality of life of the State.”

10 V.S.A.15 §302



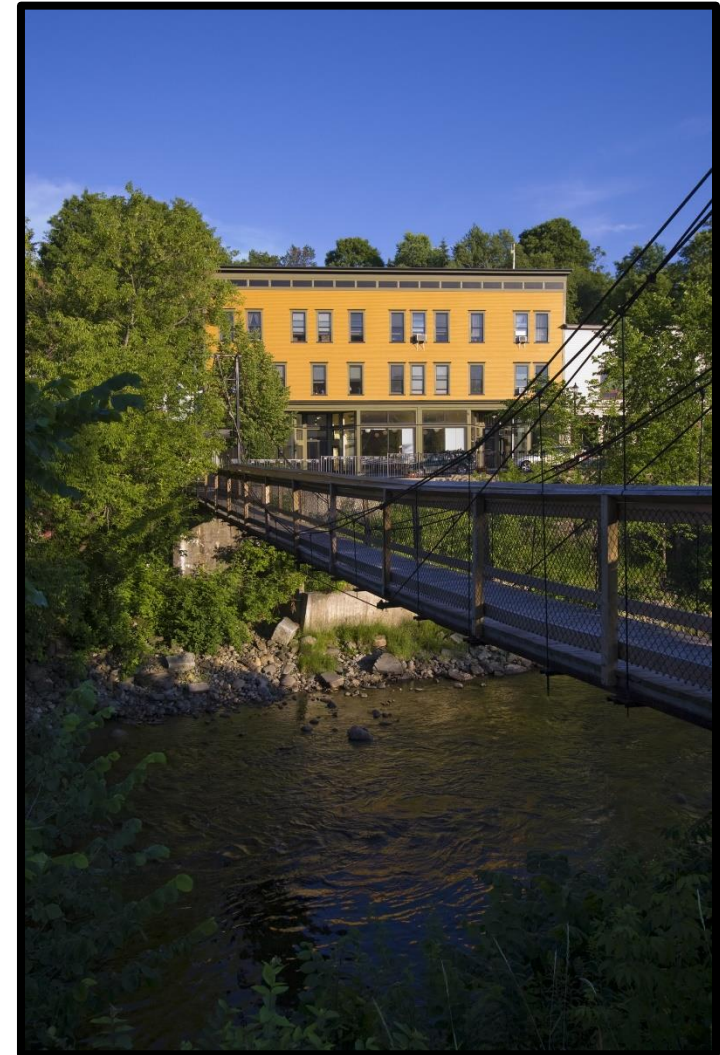
33 Years of Housing & Conservation

- 269,423 acres of working forests, natural areas and recreational lands
- 13,773 affordable homes– rental and homeownership
- 167,00 acres on 758 farms
- 72 historic buildings have been restored for community use
- 900 businesses have enrolled in our Farm & Forest Viability Program

Permanent Affordability



New housing in downtown St. Albans through a public private partnership – Champlain Housing Trust, private developer and the City – is revitalizing a blighted block to provide mixed income housing, including for those leaving homelessness, for decades.



In the early 1990s, the Lamoille Housing Partnership and Evernorth filled a block left vacant by a fire in Hardwick with a new commercial and residential building with nine affordable apartments.

Housing for Those Experiencing Homelessness

- Create and preserve housing affordable to lower-income Vermonters
- Only direct state funding for building affordable housing
- Grants and Loans for:
 - Buildings that permanently house the formerly homeless
 - Emergency shelters and transitional housing
- Training and Technical Assistance for regional housing nonprofits
- Policy work – Roadmap to End Homelessness

Roadmap to End Homelessness 2016

“An overall lack of access to affordable, decent housing in Vermont must be addressed ... to end homelessness in the state.”



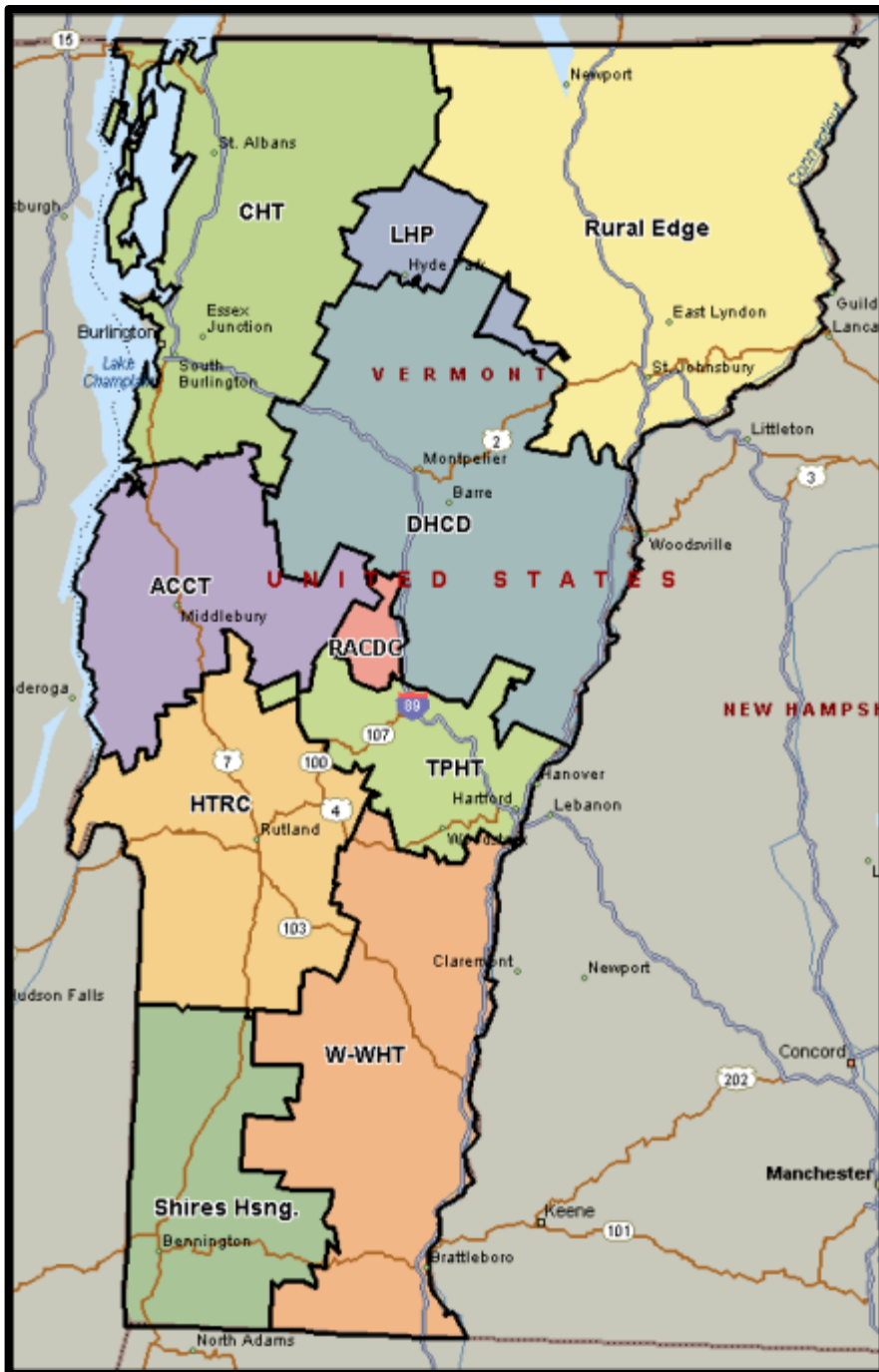
Vermont Delivers Affordable Housing Through a Non-profit Network

Regional

Addison County Community Trust
Champlain Housing Trust
Downstreet Housing and Community Development
Housing Trust of Rutland County
Lamoille Housing Partnership
Rural Edge
Shires Housing
Twin Pines Housing
Windham & Windsor Housing Trust

Statewide

Cathedral Square Corporation
Evernorth
Housing Foundation, Inc.





State Investment in Affordable Housing Provides Transitions to Permanent Homes

In 2016, the Governor issued an Executive Order setting a goal for all owners of publically funded housing to make **15%** of their apartments available to the homeless.

Currently, the % of non-profit apartments occupied by the homeless ranges by region from **15% to 40%**.

In FY20, **31%** of all apartment turnovers in the affordable housing network were leased to a household experiencing homelessness.



Coronavirus Relief Funding

\$34.25 Million



Permanent housing and safe shelter for those experiencing homelessness related to the COVID-19 public health emergency



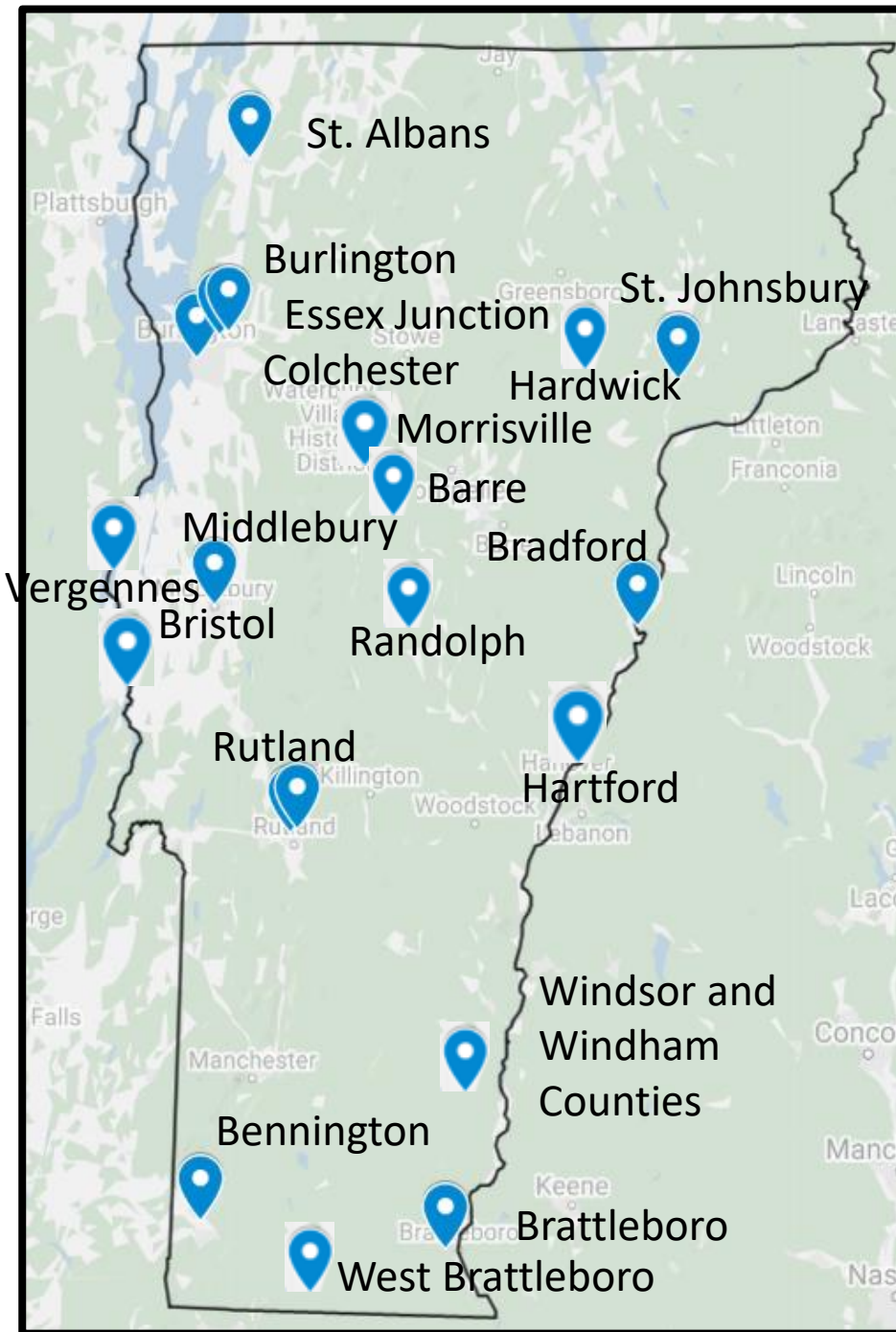
Results

247 new units acquired and/or rehabbed to become permanently affordable housing. As of 12/31/20

222 completed

153 occupied (185 people)

Health and safety improvements to **12 emergency shelters** to ensure compliance with CDC guidelines.



- Barre
- Bennington
- Bradford
- Brattleboro
- Bristol
- Burlington
- Colchester
- Essex Junction
- Hardwick
- Hartford
- Middlebury
- Morrisville
- Randolph
- Rutland
- South Burlington
- St. Johnsbury
- St. Albans
- Vergennes
- West Brattleboro
- Windham & Windsor Counties



ANEW Place, Burlington

ANEW, with support from the Cathedral Square Corporation, used CRF \$s from VHCB to purchase and rehabilitate the Champlain Inn to house up to 50 people in the 33-unit motel. At the end of the year, 44 people were staying there. The property also includes a 2,800 square foot house that will provide space for on-site services, group meetings, and laundry facilities in the new low-barrier shelter.



KTP Mobile Home Park, Bristol



In partnership with the Addison County Community Trust, the **John Graham Shelter** has purchased three zero-energy modular homes to place at a mobile home park that will be rented to homeless households.

Five more ZEMS will soon be delivered and made available to homeless families in Bradford and Hardwick in coordination with local Continuums of Care





Woodstock Avenue, Rutland

This former John Deere dealership is now 9 apartments with support services for households experiencing homelessness. The Rutland Housing Authority is working with the Rutland Regional Medical Center on the project.

**Housing
for Health**

A campaign to help establish safe, secure, and supportive transitional housing in our community.

 **Rutland Regional
Medical Center**
Healthy You. Healthy Together.

 **Rutland
Housing Authority**

A graphic for a campaign titled "Housing for Health". The text is in blue and white. Below the title is a blue banner with white text. At the bottom are logos for the Rutland Regional Medical Center and the Rutland Housing Authority.

Tiny Homes, Barre



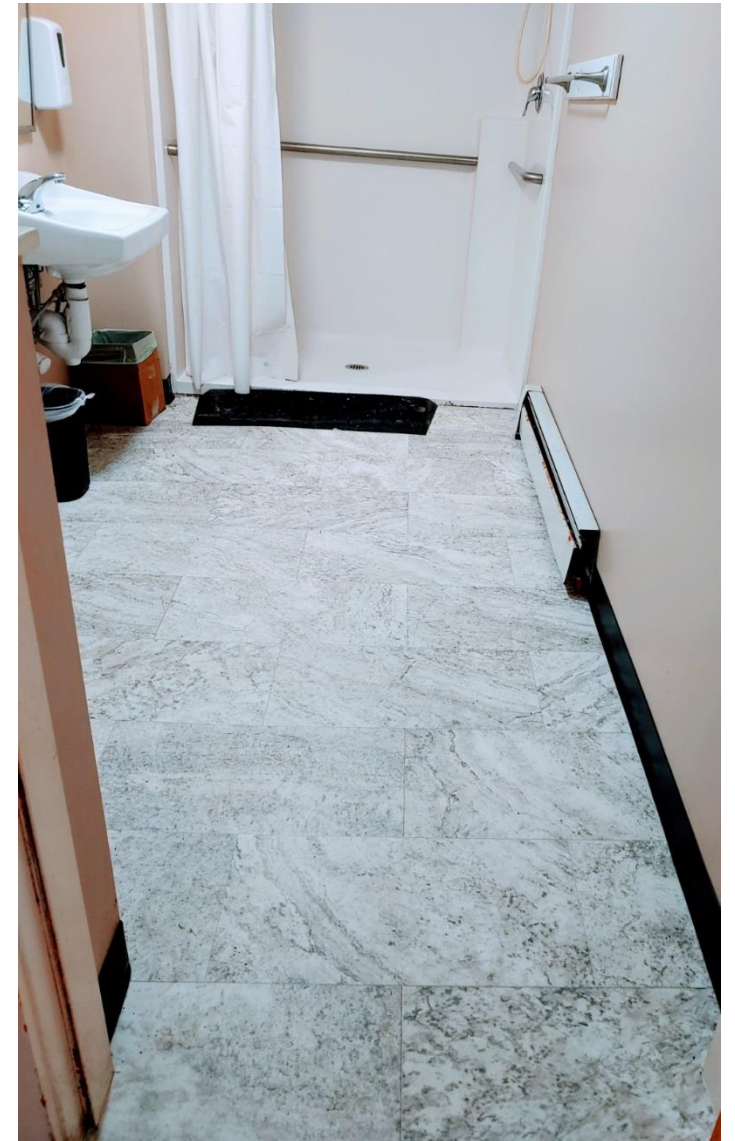
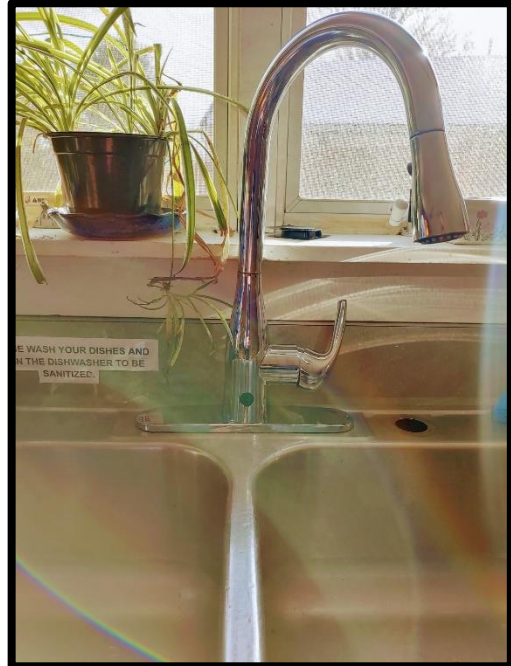
Downstreet Housing & Community Development used CRF to pay for a second tiny home for someone experiencing chronic homelessness. The first home was built by Norwich University students but they were not able to do the second due to the COVID shutdown.

Groundworks Collaborative, Brattleboro



Groundworks Collaborative build a new, seasonal shelter with 20 beds on South Main Street that will also serve as a year-round day program for people experiencing homelessness and provide administrative space. They are adding bed partitions, touchless faucets, and upgrade ventilation in the kitchen. At their existing, 12-bed shelter on Royal Road, Groundworks will convert office space to a new bedroom, adding 4 beds, improve ventilation, and add touchless fixtures.

John Graham Shelter, Vergennes



The John Graham Shelter added new flooring, countertops, touchless fixtures, dishwashers, two new bathrooms, acrylic dividers, and a ventilation system.

Ho Hum Motel, South Burlington



The **Champlain Housing Trust** purchased the Ho Hum Motel on the Williston Road, with up to 34 rooms for an isolation and quarantine site to help address and prevent the spread of COVID-19 in Vermont. It can eventually be used as permanent housing.

NewStory Center & Women's Freedom Center



Pre-COVID Training session for advocates who serve at NewStory and the Freedom Center's shelters.

NewStory Center, a family shelter in Rutland serving victims of domestic and sexual violence, will add a ventilation system, touchless fixtures and doors, a dishwasher, renovate bathrooms, replace flooring, and expand a deck to create a 3-season room for social distancing.

The **Women's Freedom Center**, providing services and shelter to survivors of domestic and sexual violence in Windham and Southern Windsor Counties will add ventilation systems to three buildings.

STEPS, Colchester



The Champlain Housing Trust purchased Handy's Extended Stay Suites on Route 15 where **Steps to End Domestic Violence** has established a new shelter serving up to 21 households escaping domestic and sexual violence. 18 adults and 19 children were sheltering there over the holidays.

The Chalet, West Brattleboro

The Windham & Windsor Housing Trust purchased **Dalem's Chalet** and has rehabilitated the former motel to create 27 permanent homes with on-site supportive services to be coordinated by Groundworks Collaborative. The site will allow for additional housing development over time.



How Housing Matters

“Housing is a critical vaccine that can pave the way to long-term health and well-being.”

Megan Sandel, MD, MPH
Associate Professor of Pediatrics at
the Boston University School of Medicine



Gus Seelig

Executive Director

Jen Hollar

Director of Policy &
Special Projects

